



18 GHz

SMA

LATCHING

TRANSFER

SWITCH

Page  
1 / 2

OPTIONS:

### R F CHARACTERISTICS

FREQUENCY RANGE : 0 - 18 GHz  
IMPEDANCE : 50 Ohms

FREQUENCY (GHz)	0 - 3	3 - 8	8 -12.4	12.4- 18
V.S.W.R	<= 1.20	1.30	1.40	1.50
INSERT. LOSS	<= 0.20 dB	0.30 dB	0.40 dB	0.50 dB
ISOLATION	>= 80 dB	70 dB	65 dB	60 dB
AVER. POWER (*)	120 W	80 W	60 W	50 W

### ELECTRICAL CHARACTERISTICS

ACTUATOR : LATCHING  
NOMINAL CURRENT AT 25° C (±10%) : 320 mA  
ACTUATOR VOLTAGE (Vcc) : 12V (10.2 to 13V)/ POSITIVE COMMON  
TERMINALS : solder pins (250 Deg.C max./30 sec)

### MECHANICAL CHARACTERISTICS

CONNECTORS : SMA female per MIL C 39012  
LIFE : 2.500.000 cycles  
SWITCHING TIME (nominal voltage;25° C) : < 15 ms  
CONSTRUCTION : splashproof  
WEIGHT : < 85 g

### ENVIRONMENTAL CHARACTERISTICS

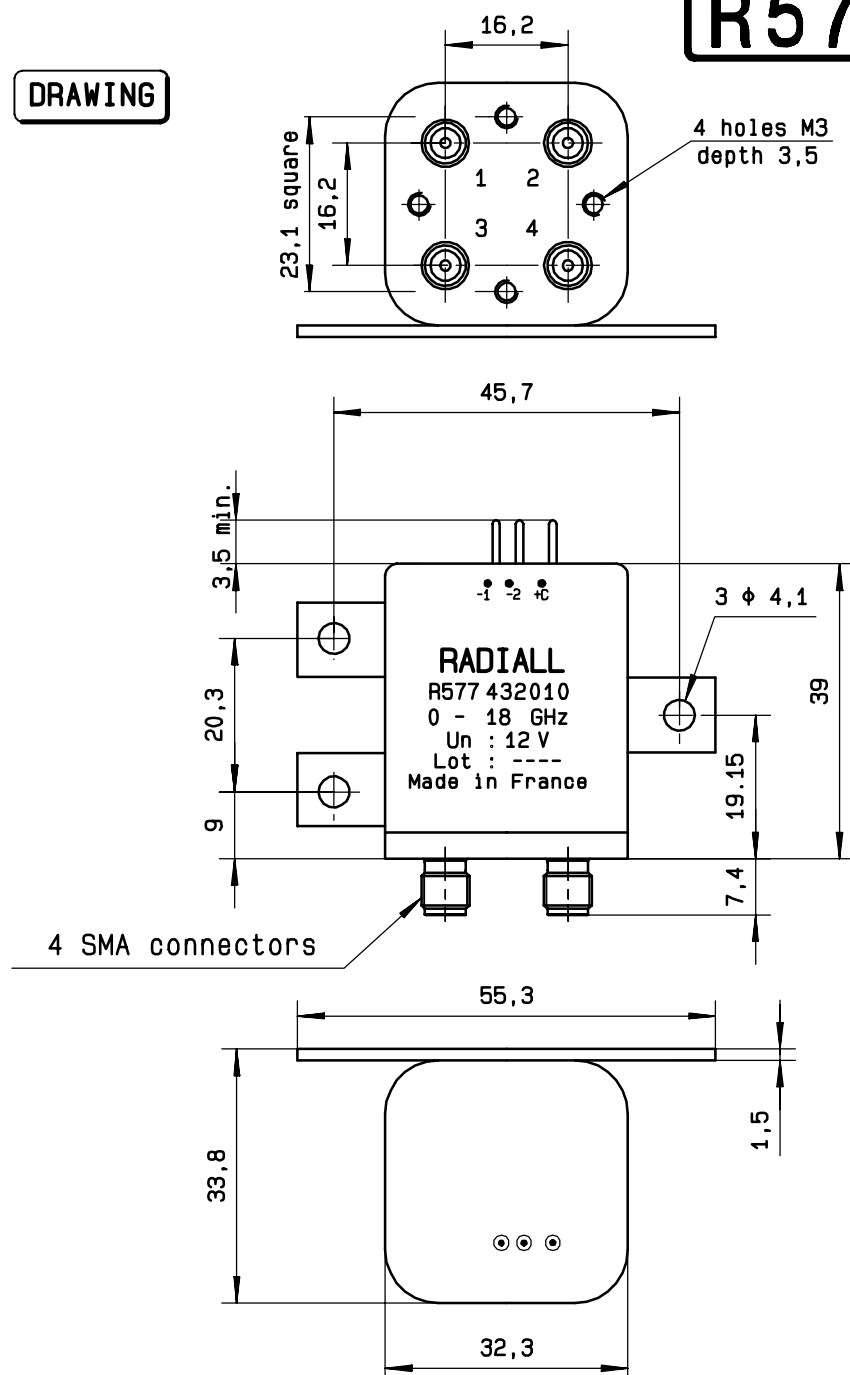
OPERATING TEMPERATURE RANGE (°C) : -40 , +85  
STORAGE TEMPERATURE RANGE (°C) : -55 , +85

(\* : average power at 25° C)

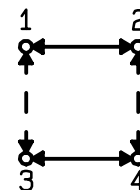
# R577.432.010

Page  
2/2

## DRAWING

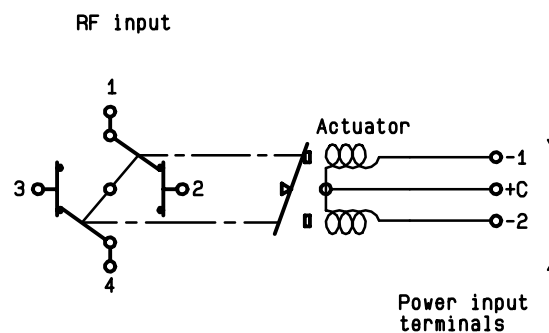


General tolerance:  $\pm 0,5$  mm



## SCHEMATIC DIAGRAM

Voltage	RF continuity
+ C - 1	1 ↔ 3 2 ↔ 4
+ C - 2	1 ↔ 2 3 ↔ 4



ISSUE 29.Mar.01